



YOU HAVE THE POWER

WITH AROUND THE CLOCK PROTECTION



Sani-24[®]



INTERVENTIONAL CARE PATIENT CARE ENVIRONMENT OF CARE

DISINFECTS IN 1 MINUTE

CONTINUOUSLY ACTIVE DISINFECTION 24 HOURS

BACTERICIDAL AND VIRUCIDAL
- One minute disinfectant

- 24 hour disinfection of bacteria: Enterobacter aerogenes, Enterococcus faecalis VRE (Vancomycin resistant enterococci), Pseudomonas aeruginosa, Staphylococcus aureus, and Staphylococcus aureus (Methicillin Resistant) (MRSA)

ACTIVE INGREDIENTS:

Alkyl Dimethyl Benzyl Ammonium Chloride (50% _W , 40% _V , 10% _C)	0.276%
Dioleoyl Dimethyl Ammonium Chloride	0.104%
Octyl Decyl Dimethyl Ammonium Chloride	0.207%
Dioctyl Dimethyl Ammonium Chloride	0.104%
Ethanol	68.610%
OTHER INGREDIENTS	30.699%
TOTAL	100.000%

KEEP OUT OF REACH OF CHILDREN
WARNING SEE BACK PANEL FOR ADDITIONAL PRECAUTIONARY STATEMENTS.
Net Contents 32 fl. oz. (946 mL)





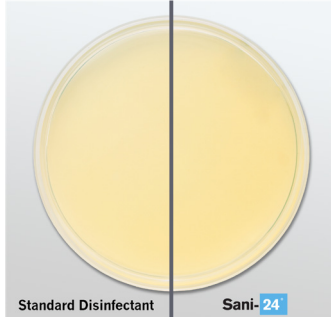
AROUND-THE-CLOCK PROTECTION

You can't be everywhere, nor can you disinfect a surface each time it has been touched.

Now with **Sani-24**® Spray, the world's first Continuously Active Disinfectant (CAD)*, you have the power to protect your patients, staff and your facility with confidence and control.

REVOLUTIONARY TECHNOLOGY TO HELP BREAK THE CHAIN OF SURFACE RECONTAMINATION

Immediate Disinfection



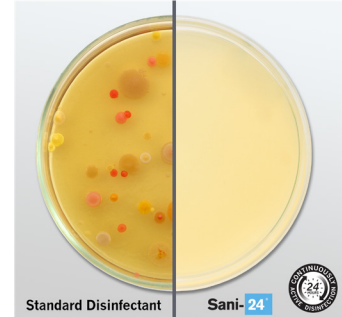
Standard disinfectants and **Sani-24**® Spray immediately kill pathogens at point of use.

12 Hours Later



With standard disinfectants, as soon as pathogens come into contact with surface, they can immediately contaminate and re-colonize it until the next time the surface is disinfected.

24 Hours Later



Sani-24® Spray's CAD technology leaves behind a shield that prevents key epidemiologically relevant pathogens* from recontaminating and recolonizing the surface for up to 24 hours or 96 touches.

SIMPLE AND EFFICIENT

- Just spray and walk away
- Compatible with a broad range of surfaces and equipment in the health care environment**



Enterobacter aerogenes
Enterococcus faecalis
 VRE (Vancomycin resistant enterococcus)
Pseudomonas aeruginosa
Staphylococcus aureus
Staphylococcus aureus
 (Methicillin Resistant) (MRSA)



Soft surface sanitization

REORDER NO. CASE PACK TI/HI CASE WEIGHT CASE CUBE

Sani-24® Germicidal Spray

	REORDER NO.	CASE PACK	TI/HI	CASE WEIGHT	CASE CUBE
Spray Bottle	X14109	32oz/bottle, 9 bottles/case	13/3	20.00 lbs	1.054

Protect your patients and staff today: pdihc.com/Sani-24

*CAD addresses *Enterobacter aerogenes*, *Enterococcus faecalis* VRE (Vancomycin resistant enterococcus), *Pseudomonas aeruginosa*, *Staphylococcus aureus*, *Staphylococcus aureus* (Methicillin Resistant) (MRSA with a 5 minute contact time).

**Refer to device manufacturer's instructions for use.

EPA Reg. No.: 42182-9

©2019 PDI 400 Chestnut Ridge Road Woodcliff Lake, NJ 07677
 T: 800-999-6423 W: pdihc.com PDI05190655



INTERVENTIONAL CARE PATIENT CARE ENVIRONMENT OF CARE